

Do the number of hospital admissions for Parkinson's patients go up when the PD Nurse Specialist is on leave?

Dr Irene Hubbard  
Kettering General Hospital

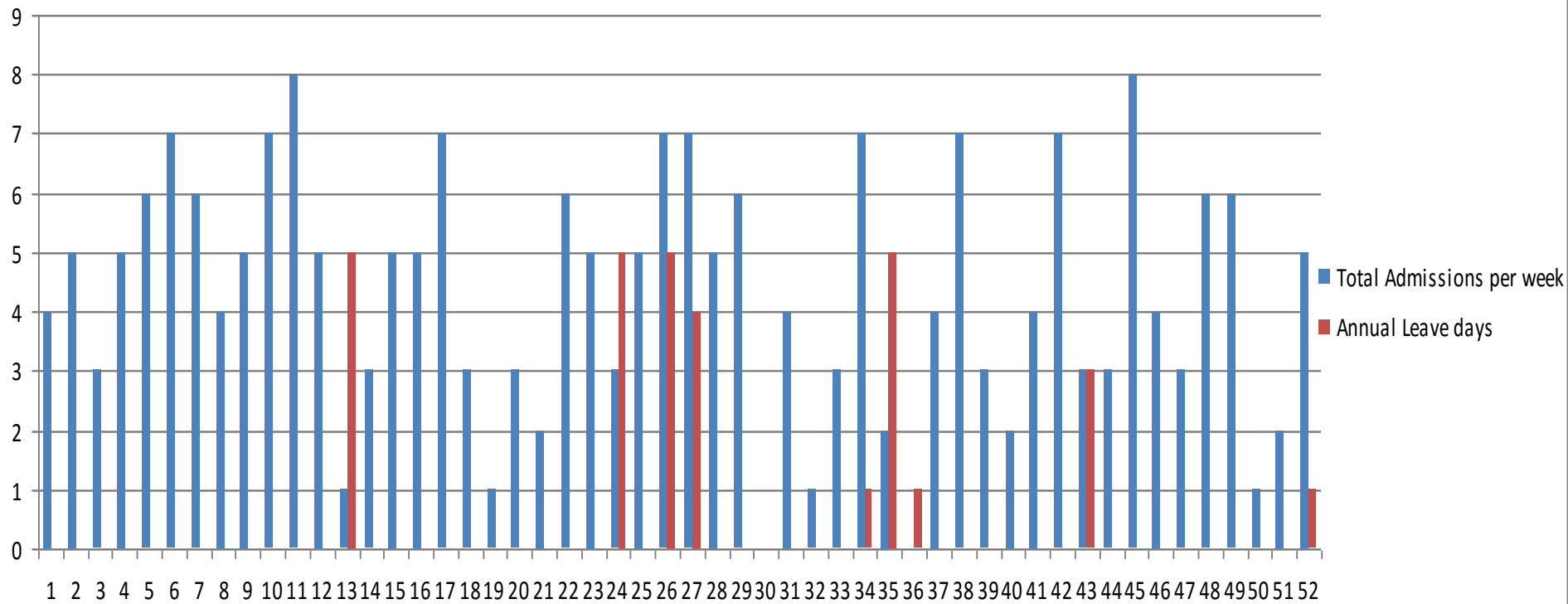
# 2008 data

- Total of 224 patients with Parkinson's Disease admitted to KGH for any reason during 2008.
- Week numbers 1 to 52 during 2008
- Annual leave days taken each week by Parkinson's Disease Nurse Specialist.
- Number of admissions of patients with PD noted each week.

# PDNS Annual leave dates

- March 24 - 28 2008
- June 9 - 13 2008
- June 23 - 27 2008
- July 1 - 4 2008 (sick leave)
- August 22 - September 1 2008
- October 29 - 31 2008
- December 24 2008 - January 5 2009

# Number of PD patients admitted vs PDNS annual leave days



# Do the number of hospital admissions for Parkinson's patients go up when the PD Nurse Specialist is on leave?

*Dr Irene Hubbard*  
*Kettering General Hospital*

## Data 2008

Total of 224 patients with Parkinson's Disease admitted to KGH for any reason during 2008.

Week numbers 1 to 52 during 2008  
Annual leave days taken each week by Parkinson's Disease Nurse Specialist.

Number of admissions of patients with PD noted each week.

## PDNS Annual leave Dates 2008:

March 24 - 28 2008

June 9 - 13 2008

June 23 - 27 2008

July 1 - 4 2008 (sick leave)

August 22 - September 1 2008

October 29 - 31 2008

December 24 2008 - January 5 2009

2009

